

# A.I.R.

## ***Active directions of the mind***

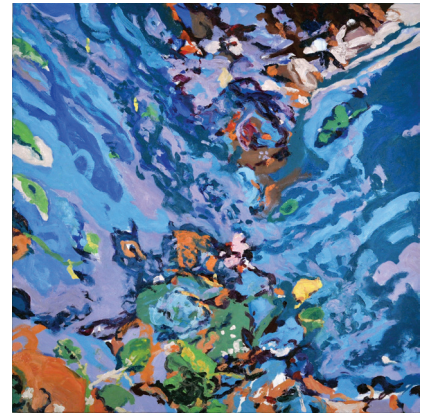
Hend Al-Mansour, Diane Cionni, d'Anne de Simone, Kathryn Hart, Jody Joldersma, Katherine Mann, Jennifer McCandless, Mimi Ortisky, Ruth Owens, Allison Paschke, Simone Paterson, Laura Petrovich Cheney, Alice Pixley Young, Martha Sedgwick, Ann Stoddard, Marlana Stoddard Hayes, Vicky Tomayko, Ellyn Weiss, Holly Wong, and Mineko Yoshida

Curated by Alexis Wilkinson

May 23 – June 23, 2019

Opening Reception: Thursday, May 23, 6-8pm

DUMBO's First Thursday Art Walk: June 6, 6-8pm



Mimi Ortisky, *Wet on Bright No.1*, 2017, oil on canvas, 30 x 30 inches.

The 2019 A.I.R. National Members exhibition, *Active directions of the mind*, highlights the ways in which attention can operate as an activated mode of questioning and care, as expressed by the artworks included.

To give attention to something is generous; it denotes consideration and observant care, and the artwork made by twenty of A.I.R. Gallery's National Members demonstrates their orientation toward a thoughtful mode of *attending to*. They create artworks with a wide range of stylistic and material approaches, reflecting a plurality of experiences and perspectives that A.I.R. has historically embraced since its inception — a testament to the fact that we each see, hear, feel, experience, and perceive differently.

At its root, the term *attention* is defined by “active direction of the mind upon some object or topic,” a mind which is “stretching toward.” Considering that active minds do wander, the logic of the exhibition as installed in the galleries at A.I.R. is intended to allow the viewer to be guided by the artworks of the National Members, organized not by formal or thematic groupings but instead with adjacencies that are intended to amplify ideas, resonate formally, and reveal unexpected affinities. If we look closely, we might notice that, together, the works in the exhibition signal the ways that difference can spark generative dialogue.

As an artist-run organization, A.I.R. has a national membership of self-identified women artists. This group of women artists forms a network of support and opportunity for each other with the New York-based member artists. A.I.R.'s National Artists Program is designed for 22 women artists living throughout the United States.

A.I.R. Gallery is wheelchair accessible via ramp. There are accessible toilets in the venue. There is comfortable seating with backs. Free tap water is available. The venue is nearest to the F train at York St (0.2 miles) and the A train at High St (0.5 miles). The nearest wheelchair accessible trains are the B, Q, R at Dekalb Av (1.1 miles) and the 2, 3 at Borough Hall (0.8 miles). The roads immediately surrounding the gallery are cobblestone. The nearest accessible parking garage (for an hourly fee) is two blocks away at 100 Jay St. No ID necessary for entry. Please contact [info@airgallery.org](mailto:info@airgallery.org) for more information.